

S. H. Værktøjsmaskiner ApS

IMPORT * EXPORT * SERVICE

Klokkestøbervej 9
9490 Pandrup
Tlf. 98 20 44 00
Fax. 98 20 42 40
Internet: www.shv.dk
E-mail: info@shv.dk

SHV HEAVY

CNC
LATHE SERIES

Ø1000 Ø1250 Ø1600

CNC LATHE SERIES



**Model**CK61100/125/160
CKJ61100/125/160**Specification**

1500/3000/5000

CNC
LATHE SERIES

CK61100, CK61125, CK61150 and CKJ61100, CKJ61125, CKJ61160 series are economical large type CNC lathes. Spindle speeds of CK61100, CK61125, CK61160 series are changed by frequency converter in 4 hydraulic gear-shifts, and it's all manually for CKJ61100, CKJ61125, CKJ61160 series. AC servo motor is adopted in feeding system, and the tailstock is moved electrically. So these machines are ideal equipment for large and middle sized complicated workpieces precision machining in batches.



CNC
LATHE SERIES
Ø1000 Ø1250
Ø1600



Item	Unit	CK61100	CK61125	CK61160
Capacities				
Swing over bed	mm	1000	1250	1640
Swing over carriage	mm	630	880	1250
Max. workpiece length	mm	1500 3000 5000		
Max. turning length	mm	1200 2700 4700		
Span of guideway	mm	755		
Spindle	Max. load between spindle and pinol 6 Ton.			
Spindle nose		A215	A215	A215
Chuck	Manual	Φ1000	Φ1000	Φ1000
Spindle bore	mm	Φ130		
Taper hole of spindle	mm	1:20/140		
Spindle speed and range		CK CKJ	3.15 – 315r/min 3.15 – 315r/min	
			3.5 – 291r/min	
Center height from bed	mm	500	625	820
Feed motion				
X/Z	Min. feed increment of x-/z-axis	mm	0.001/0.001	
X/Z	Rapid speeds of x-/z-axis	mm/min	3000/6000	
X	Max. travel of x-axis	mm	520	580 630
Turret				
	Turret working position		V4	
	indexing time	s	2.6	
	indexing repeatability	mm	0.01	
	Section of tool shank	mm	□40	
Tailstock				
	Diameter of Tailstock quill	mm	160	
	Travel of tailstock quill	mm	300	
	Taper Hole of tailstock quill		Morse 6	
Accuracy and Acceptance conditions				
	Workpiece accuracy		IT6 – IT7	
	Surface roughness	μm	Ra1.6	
	Acceptance conditions		JB/T8324.1 – 96 JB/T8324.2 – 96	
Others				
	Main power	kW	22	
Machine overall dimensions				
	Length	mm	4500 6000 8000	
	Width	mm	2435	
	Height	mm	2300/2600	
	Machine mass	kg	9000	11000 13000

Main Technical specifications



CNC
LATHE SERIES

Ø1000 Ø1250
Ø1600

Accessories standard

- 1. FANUC-0/SIEMENS-802D AC servo CNC unit
- 2. Electric tailstock
- 3. V4 turret
- 4. Ø1000 4-jaw manual chuck
- 5. Centralized auto-lub
- 6. Standard accuracy
- 7. Working lamp
- 8. Cutting fluid system
- 9. Semi-close protection
- 10. Electric cabinet air conditioner
- 11. Standard colour
- 12. Documents
- 13. Standard tool and accessories

Accessories optional

- 1. Other CNC unit
- 2. Hydraulic tailstock
- 3. V6 turret, tool holder
- 4. V6/V8 turret, tool holder
- 5. Other manual chucks
- 6. Power chucks
- 7. 3-jaw power chuck
- 8. Ø50~470 steady rest
- 9. Ø50~220 follow rest
- 10. Live center
- 11. Higher precision
- 12. Deep-hole boring unit



CNC
LATHE SERIES





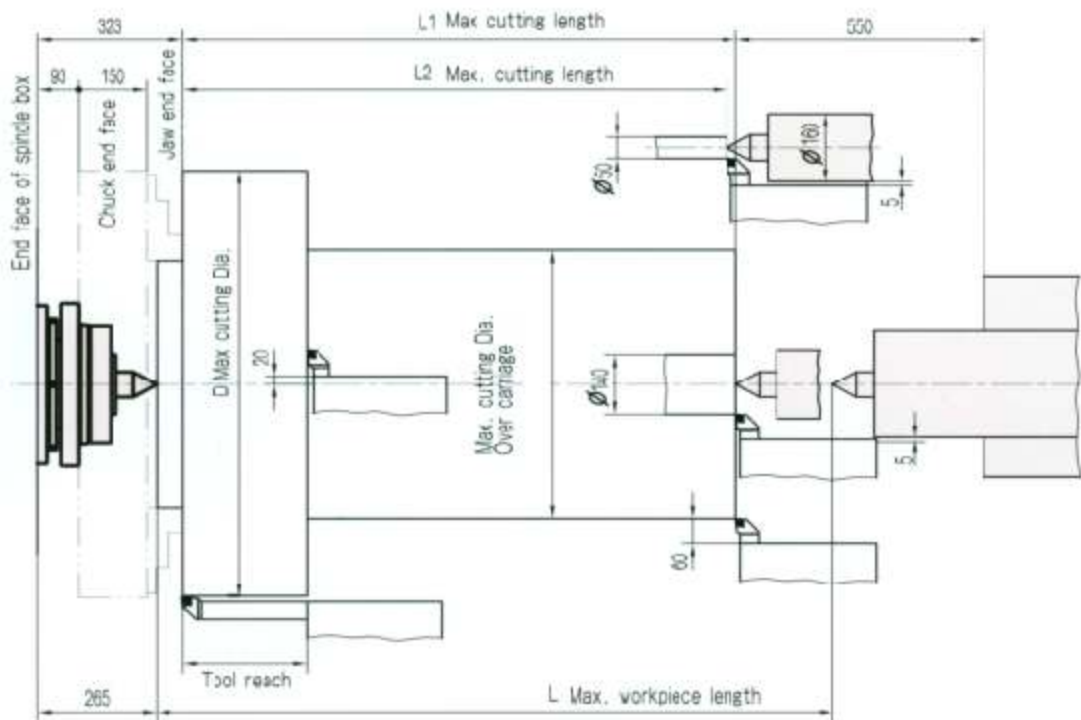
CNC

LATHE SERIES



CK,CKJ61100/CK,CKJ61125/CK,CKJ61160

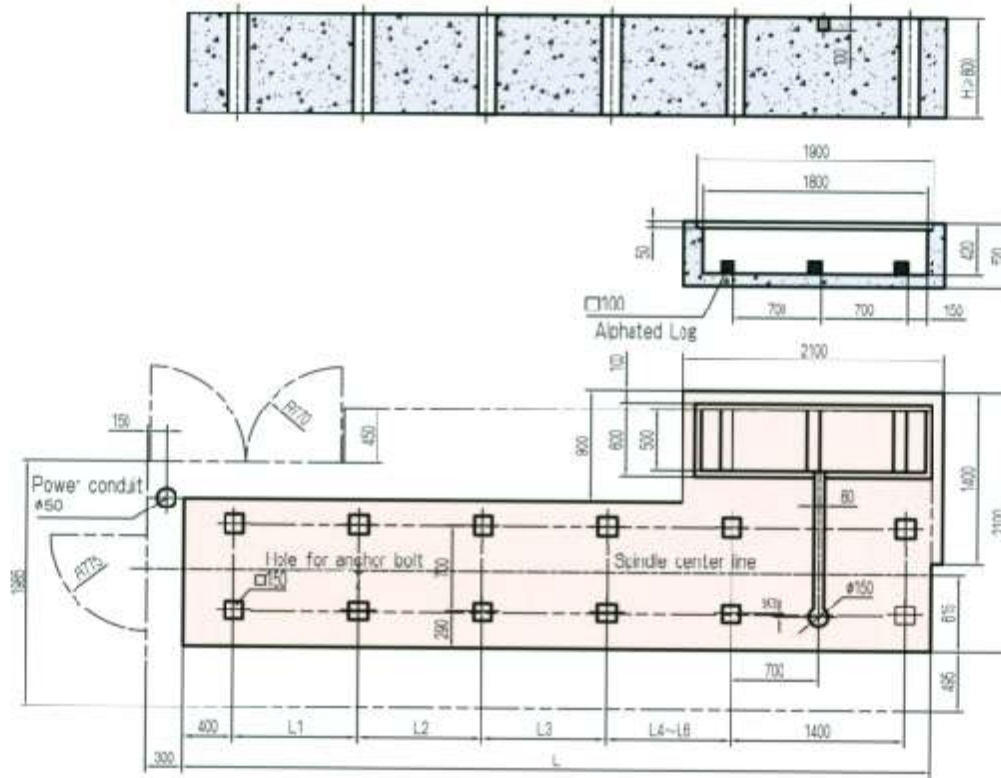
Work Envelope for V4 Turret



	CK61100 CKJ61100			CK61125 CKJ61125			CK61160 CKJ61160		
L	1500	3000	5000	1500	3000	5000	1500	3000	5000
L1	1230	2730	4730	1230	2730	4730	1230	2730	4730
L2	1220	2720	4720	1220	2720	4720	1220	2720	4720
D	1000			1250			1330		
d	630			880			1250		

CK,CKJ61100/61125/61160

Foundation



	L	L1	L2	L3	L4	L5	L6	H
1500	4500	1250	1250					
3000	6000	1000	1000	1000	1000			
5000	8000	1000	1000	1000	1000	1000	1000	



CNC
LATHE SERIES
Ø10000 Ø12500
Ø16000

CNC
LATHE SERIES

Ø1000 Ø1250
Ø1600

SHV HEAVY

S. H. Værktøjsmaskiner ApS

IMPORT * EXPORT * SERVICE

Klokkestøbervej 9
9490 Pandrup
Tlf. 98 20 44 00
Fax. 98 20 42 40
Internet: www.shv.dk
E-mail: info@shv.dk