

# S. H. Værktøjsmaskiner ApS

IMPORT \* EXPORT \* SERVICE

Klokkestøbervej 9  
9490 Pandrup  
Tlf. 98 20 44 00  
Fax. 98 20 42 40  
Internet: [www.shv.dk](http://www.shv.dk)  
E-mail: [info@shv.dk](mailto:info@shv.dk)

**CWN**  
P A R A L L E L  
L A T H E S E R I E S

## SHV HEAVY CW

Ø1000    Ø1250    Ø1600

PARALLEL LATHE SERIES





CW61100Bx5000

**Model**

CW61100B/125B/160B

**Specification**

1500/3000/5000/6000/  
8000/10000/12000

  
 PARALLEL  
 LATHE SERIES



CW61125Bx5000

CW61100B CW61125B CW61160B

CW61100B CW61125B CW61160B parallel lathes are suitable for turning of cast iron and steel workpieces, turning of non-ferrous metal parts of big or medium sizes. It can do external cylindrical surface turning, inner hole and end face turning. It can also turn various internal and external metric, inch module and diametrical pitch threads, the top slide can be used independently for turning of short taper.

These lathes are of high power, high rigidity and wide rotating speed range, so it can be used for high speed and strong force turning.



## Main structure

### 1. Bed with high rigidity

Casted in whole piece, box type internal structure, of high rigidity, with hardened guideway, TSF coated carriage to minimize the possibility of low speed stick-slip.

### 2. Main spindle with high rigidity and high accuracy

Spindle bearing of famous brand, spindle-box of heat-symmetrical structure to avoid spindle axis drifting, oil lubricating to minimize heat distortion. Spindle with three support structure to secure accuracy and increase rigidity, all gears quenched and tooth-ground to secure precise transmission and low noise. So the spindle is of low temperature rise, minimized heat distortion, and long-term steady high accuracy.

CW  
CLASSICAL  
LATHE SERIES

Φ1000 Φ1250  
Φ1600



CW61160Bx5000

Item	Unit	CW61100B	CW61125B	CW61160B
Capacities				
Swing over bed	mm	1000	1250	1640
Swing over carriage	mm	615	865	1250
Maximum length of workpiece	mm	1500 3000 5000 6000 8000 10000 12000		
Maximum turning length	mm	1300 2800 4800 5800 7800 9800 11800		
Span of guideway	mm	755		
主轴 Spindle				
Spindle nose	mm	A215 (8 × M22)		
Spindle bore	mm	130		
Taper hole of spindle		1:20/140		
Number of forward turning speeds		21		
Number of reverse turning speeds		12		
Spindle speed	Forward	r/min	3.15 – 315	
	Reverse	r/min	3.5 – 291	
Feed motion				
Feed per revolution	Number of feeds per revolution (longitudinal/transverse)		56/56	
	Longitudinal	mm	0.1 – 12 (0.004" ~ 0.473" )	
	Transverse	mm	0.05 – 6 (0.002" ~ 0.236" )	
	Upper tool-post	mm	0.025 – 3 (0.001" ~ 0.118" )	
	Number and range of metric thread		44, 1 – 120mm	
	Number and range of inch thread		31, 28 – 1/4"	
	Number and range of module thread		45, 0.5 – 60mm	
	Number and range of diametrical pitch thread		38, 1/2 – 56DP	
Tool post				
	Distance between spindle center-line and tool resting plane	mm	48	
	Section of tool shank	mm	□ 45	
	Tool post swing range	°	±90°	
	Maximum travel of carriage	mm	1450 2950 4950 5950 7950 9950 11950	
	Maximum travel of top slide	mm	300	
	Maximum travel of cross slide	mm	520(20° )	580(22° ) 630(24° )
	Tool post travel per turn of the dials of top or cross slide	mm	0.05(0.002" )	
rapid travel speed	Longitudinal	mm/min	3740	
	Transverse	mm/min	1870	
	Top slide	mm/min	935	
Tailstock				
	Diameter of Tailstock quill	mm	160(6" )	
	Travel of tailstock quill	mm	300(12" )	
	Taper hole of tailstock quill		Morse 6	
Acceptance conditions				
GB/T4020 – 1997	GB/T4020–1997			
JB/T2322 – 1993	Accuracy parallel lathe			
	Terms parallel lathe			



#### Others

Main motor power	kW	22	22	22
Maximum weight of workpiece	kg	6000	6000	6000

#### Machine overall dimension

Length	mm	4600	6100	8100	9100	11100	13100	15100
Height	mm	1700		1825		2150		
Width	mm	2150						

#### Machine mass

CW61100B	kg	9200	10700	12100	12800	14200	15600	17000
CW61125B	kg	10200	11800	14800	15500	16900	18300	19700
CW61160B	kg	11400	12900	15900	16600	18000	19400	21000



1.  $\phi$  285– $\phi$  635
2.  $\phi$  800– $\phi$  1250

4.

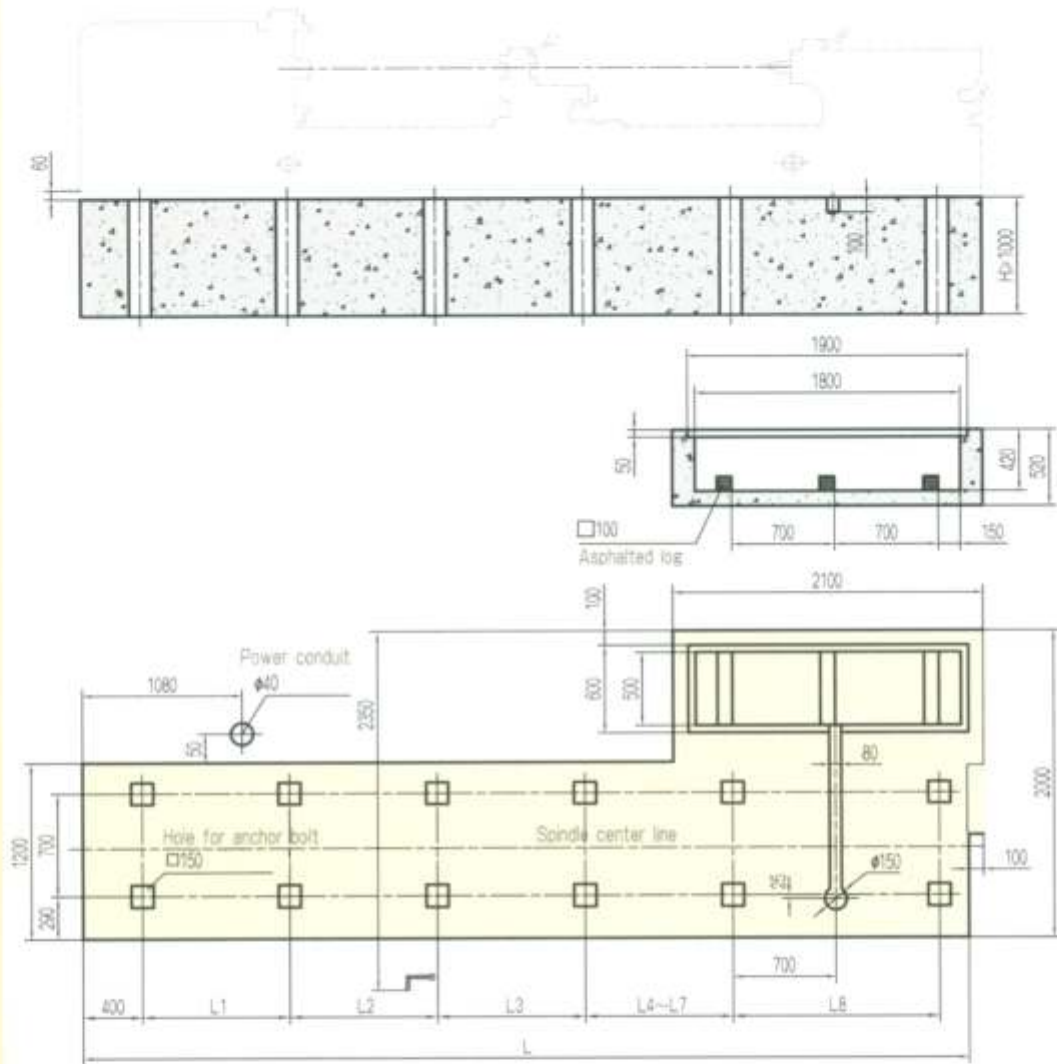
### Optional

1. Big Center rest
2. Big Centering bracket
3. Motor Driven Tailstock and Tailstock with rotarg quill
4. Chuck guard ,tool post shield,cable carring chain



CW61100B, CW61125B, CW61160B Parallel Lathe 500/1500/3000/5000/6000

Foundation



	L	L1	L2	L3	L4	L5	L6	L7	L8
1500	4500	1250	1250						1400
3000	6000	1000	1000	1000	1000				1400
5000	8000	1000	1000	1000	1000	1000	1000		1400
6000	9000	1000	1000	1000	1000	1000	1000	1000	1400



# SHV HEAVY CW61100B

**S. H. Værktøjsmaskiner ApS**

IMPORT \* EXPORT \* SERVICE

Klokkestøbervej 9  
9490 Pandrup  
Tlf. 98 20 44 00  
Fax. 98 20 42 40  
Internet: [www.shv.dk](http://www.shv.dk)  
E-mail: [info@shv.dk](mailto:info@shv.dk)