

S. H. Værktøjsmaskiner ApS

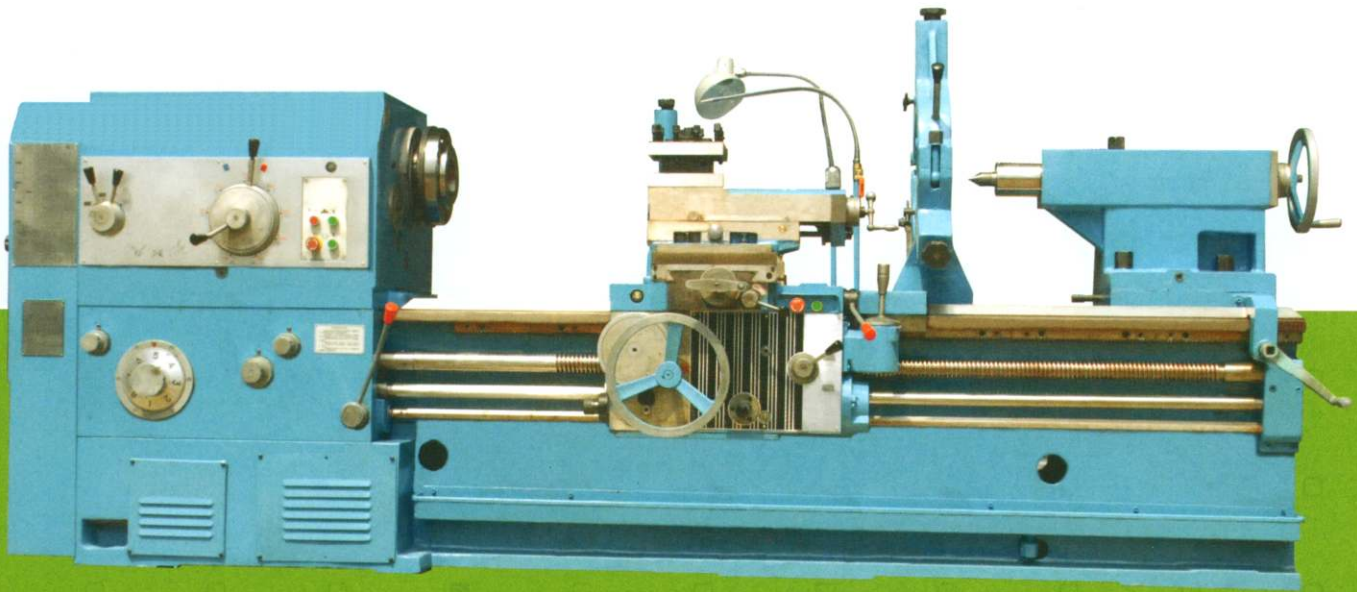
IMPORT * EXPORT * SERVICE

Klokkestøbervej 9
9490 Pandrup
Tlf. 98 20 44 00
Fax. 98 20 42 40
Internet: www.shv.dk
E-mail: info@shv.dk

CWN
P A R A L L E L
L A T H E S E R I E S

SHV HEAVY CW CW6180 PARALLEL LATHE SERIES





Model

CW6180

Specification

1500/3000/5000

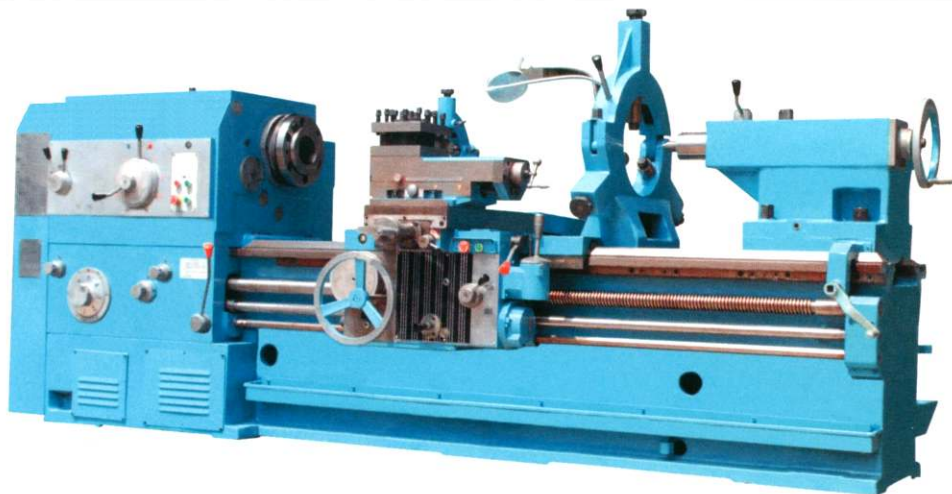
CW
PARALLEL
LATHE SERIES





CW6180 parallel lathes are suitable for turning internal and external cylindrical, conical and swing surfaces as well as various metric, inch, module and diametric pitch threads. They can also be used for broaching oil grooves and keyways. There are also following features:

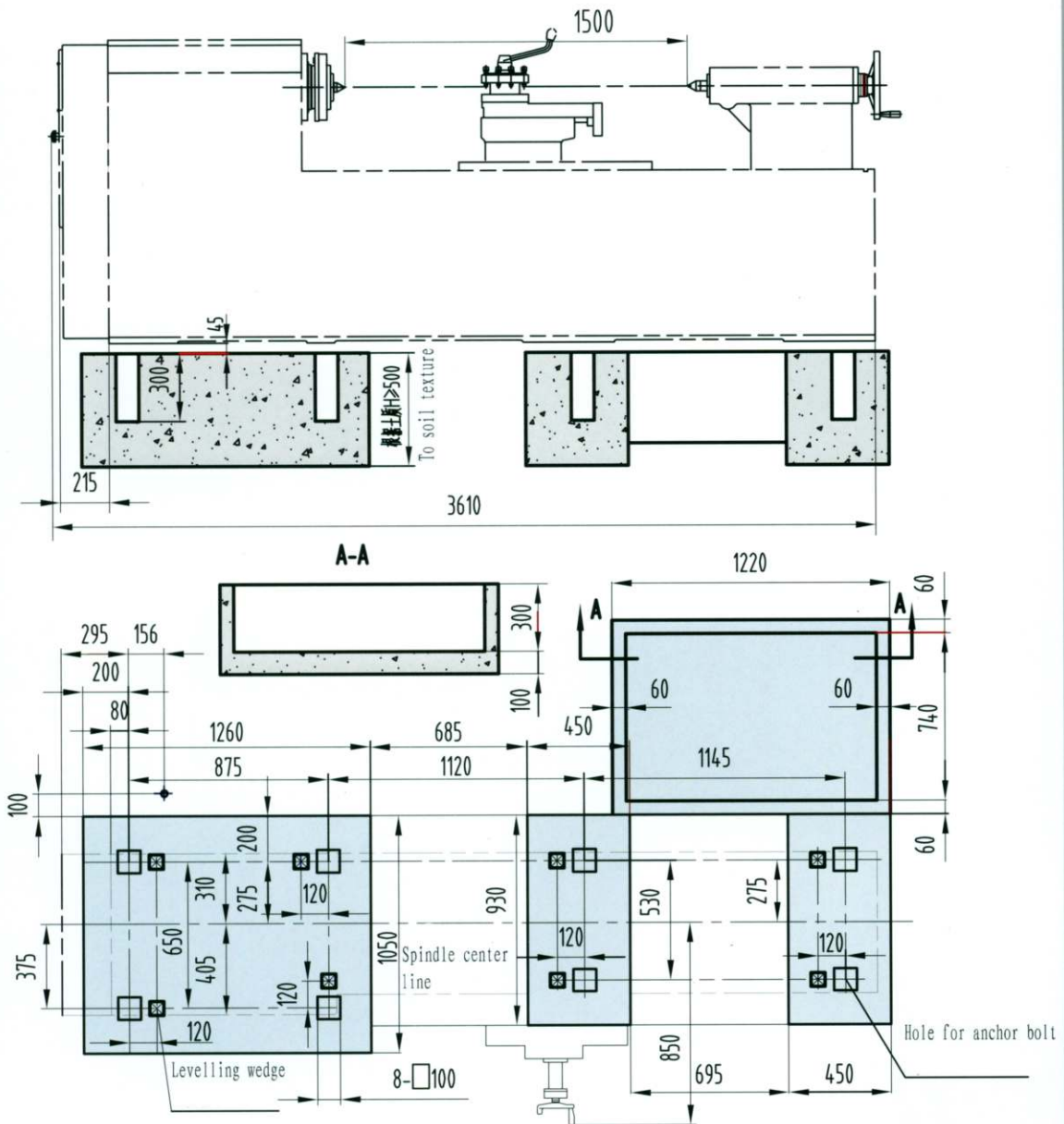
1. Casted in whole piece, box type internal structure, of high rigidity, with hardened guideway. The rigidity is high. The precision is stable. And these lathes can carry out strong force cutting.
2. On apron, there is a device, operated by a single lever, used for rapid traverse of the carriage. Spindle's braking and rotating direction change is controlled by hydraulic system, or by hand operation, all to user's choice.
3. The saddle guide-way is glued by "TSF" soft belt wear resisting materials.
4. The top slide can be used independently for turning of short cone, in combination with longitudinal feeding, it can also turn long taper surface.



| Item | Unit | CW6180 | | | |
|---------------------------|---|--------|-------------------|------|------|
| Capacities | | | | | |
| | Swing over bed | mm | 800 | | |
| | Swing over carriage | mm | 480 | | |
| | Maximum length of workpiece | mm | 1500 | 3000 | 5000 |
| | Maximum turning length | mm | 1350 | 2850 | 4850 |
| | Span of guideway | mm | 600 | | |
| Spindle | | | | | |
| | Spindle nose | mm | C15 | | |
| | Diameter of spindle thru hole | mm | 140 | | |
| | Taper hole of spindle | | 1:20/150 | | |
| | Number of forward turning speeds | | 18 | | |
| | Number of reverse turning speeds | | 6 | | |
| Spindle speed | Forward | r/min | 5.5~750 | | |
| | Reverse | r/min | 10~775 | | |
| Feed motion | | | | | |
| | longitudinal and cross | | 64; 0.1~24.32 | | |
| | Cross-to-longitudinal feed rate | | 1/2 | | |
| | Screw pitch of leadscrew | mm | 12 | | |
| | Number and range of metric thread | | 50 ; 1~240 (mm) | | |
| | Number and range of inch thread | | 26 ; 14~1 | | |
| | Number and range of module thread | | 53 ; 0.5~120 (mm) | | |
| | Number and range of diametrical pitch thread | | 24 ; 28~1 | | |
| | Rapid traverse speed of carriage | mm/min | 4000 | | |
| Tool post | | | | | |
| | Distance between spindle center-line and tool resting plane | mm | 33 | | |
| | Section of tool shank | mm | □32 | | |
| | Tool post swing range | ° | ±90° | | |
| | Max. travel of top slide | mm | 200 | | |
| | Max. travel of cross slide | mm | 500 | | |
| Tailstock | | | | | |
| | Diameter of Tailstock quill | mm | 100 | | |
| | Travel of tailstock quill | mm | 250 | | |
| | Taper hole of tailstock quill | | morse5 | | |
| Acceptance conditions | | | | | |
| GB/T4020 – 1997 | GB/T4020–1997 | | | | |
| | Accuracy parallel lathe | | | | |
| JB/T2322 – 1993 | JB/T2322–1993 | | | | |
| | Terms parallel lathe | | | | |
| Other | | | | | |
| | Main motor power | | 11 | | |
| | Machine mass | | 4900 | 5500 | 6900 |
| Machine overall dimension | | | | | |
| | Length | | 3660 | 5155 | 7390 |
| | Hight | | 1630 | | |
| | Width | | 1450 | | |

CW6180 1500

Foundation



CW
PARALLEL
LATHE SERIES

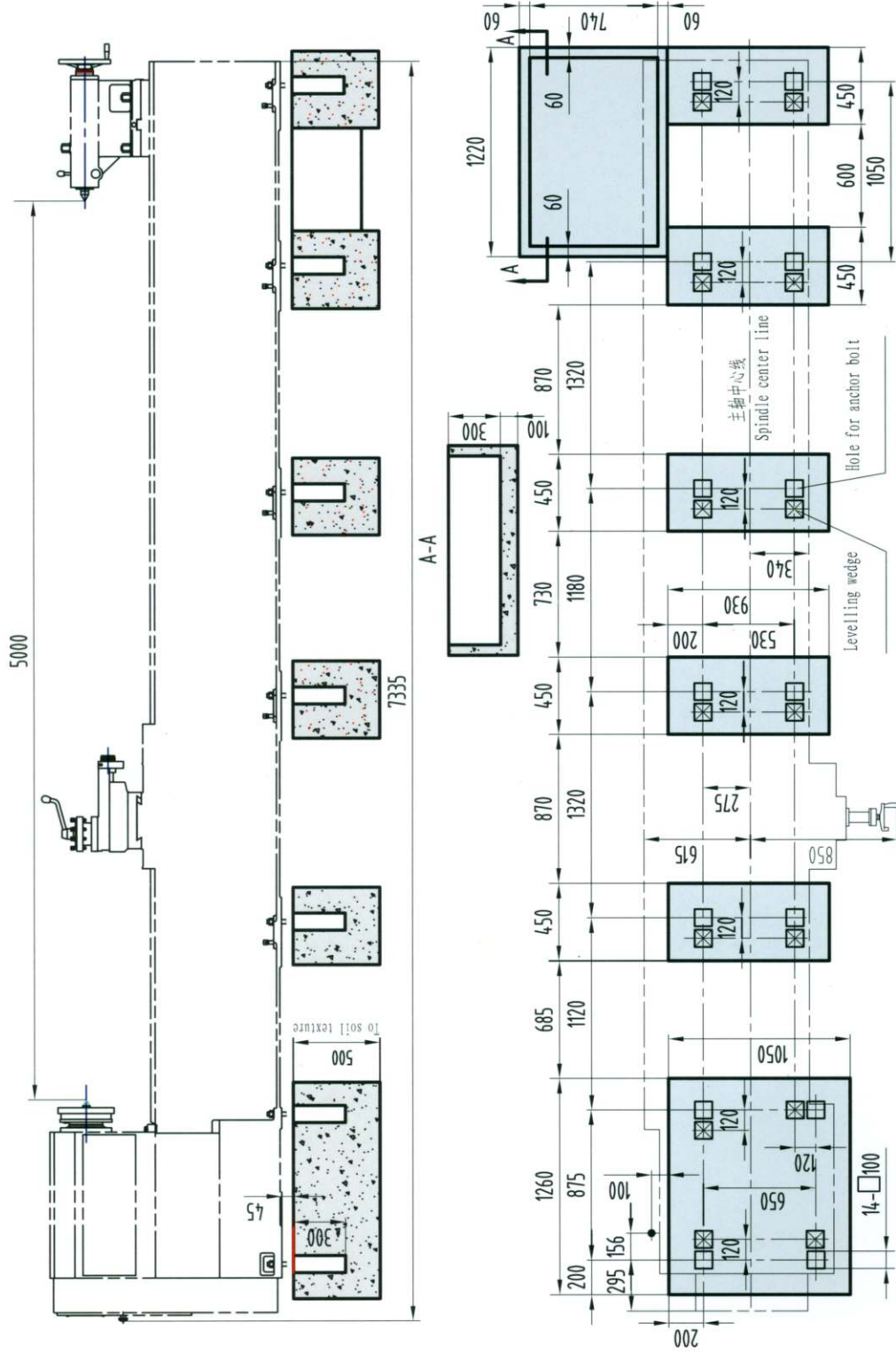
CW6180



CW6180

5000

Foundation



PARALLEL
LATHE SERIES
CW

CW6180



CW6180

SHV HEAVY CW

S. H. Værktøjsmaskiner ApS

IMPORT * EXPORT * SERVICE

Klokkestøbervej 9
9490 Pandrup
Tlf. 98 20 44 00
Fax. 98 20 42 40
Internet: www.shv.dk
E-mail: info@shv.dk