

# S. H. Værktøjsmaskiner ApS

IMPORT \* EXPORT \* SERVICE

Klokkestøbervej 9  
9490 Pandrup  
Tlf. 98 20 44 00  
Fax. 98 20 42 40  
Internet: [www.shv.dk](http://www.shv.dk)  
E-mail: [info@shv.dk](mailto:info@shv.dk)



P A R A L L E L  
L A T H E S E R I E S

## SHV HEAVY C

C61125 C61160 C61200

PARALLEL LATHE SERIES





C61125 C61160  
C61200



**Model**

C61125, C61160, C61200

**Specification**

3000, 5000, 6000, 8000, 10000

**PARALLEL  
LATHE SERIES**



This series heavy duty lathes adopt 1,100mm wide rectangular induction hardened and ground bed guide-ways, so of excellent stability, high rigidity, and with maximum bearing of 12 tons between centers. The main spindle is of precision roller bearings' main supporting structure. Saddle guide-ways with teflon belt coated. Rotating tailstock quill structure to minimize friction and heat generation.

These machines are suitable for various turning works, such as turning of external and internal cylindrical surfaces, end faces, and turning of metric or inch threads, modular threads and diametrical pitch threads, etc. Motorized short taper turning could be done by the top slide independently, and long taper's motorized turning could be done by top slide in tandem with longitudinal feed. Further more, these machines can also carry out drilling, trepanning and boring processes, etc.

PARALLEL  
LATHE SERIES

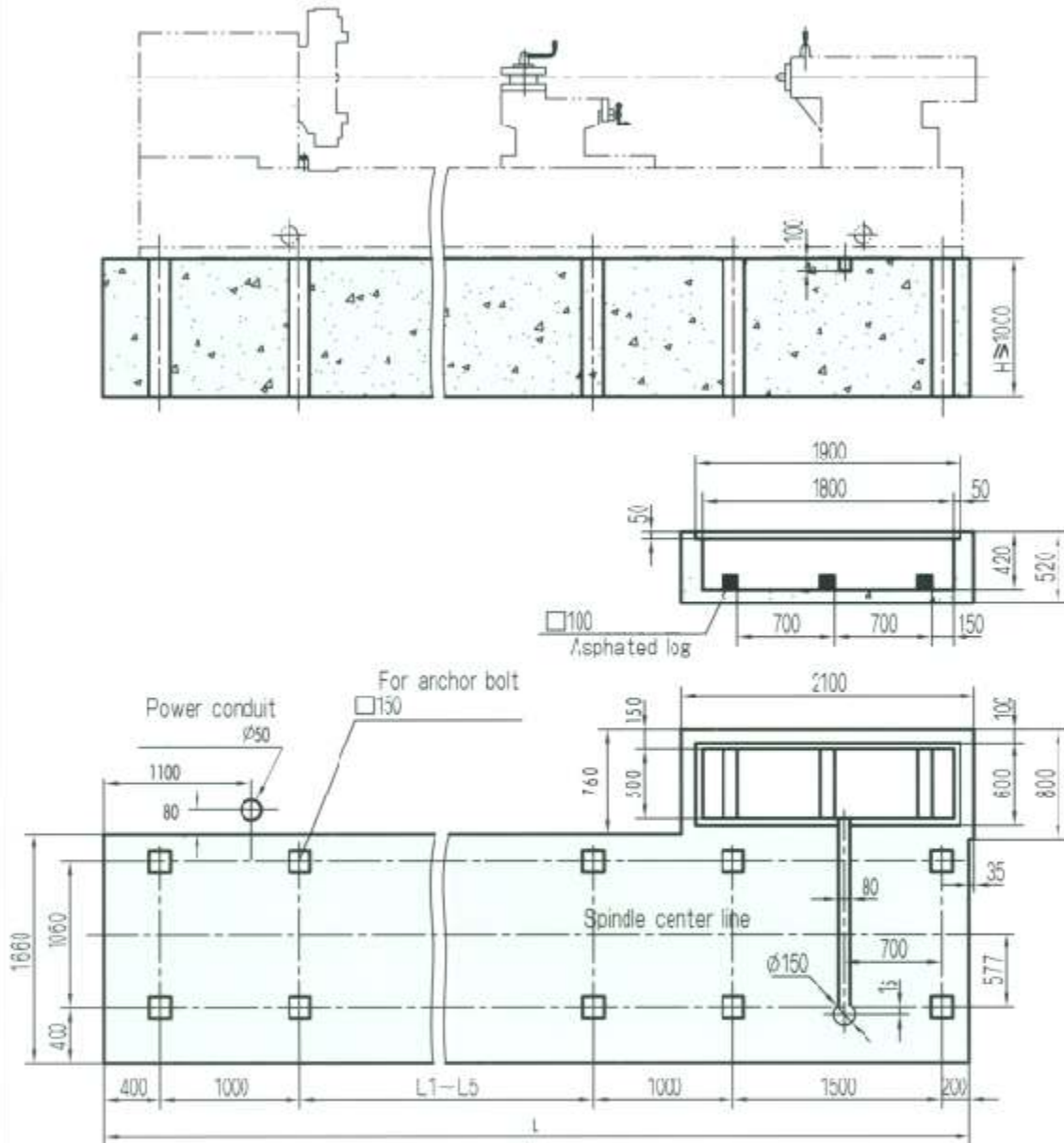
CB1125 CB1160  
CB1200



Item	Unit	C61125	C61160	C61200	
<b>Capacities</b>					
Swing over bed	mm	1250	1600	2000	
Swing over carriage	mm	900	1250	1650	
Max length of workpiece	mm	3000	5000	6000	
Max turning length	mm	2800	4800	5800	
Span of guideway	mm	1100			
<b>Spindle</b>					
Max. load between spindle and pinol 12 Ton.					
Spindle nose code	mm	A <sub>2</sub> 15			
Spindle thru bore	mm	100			
Taper hole of spindle		140			
Number of forward turning speeds		21			
Number of reverse turning speeds		12			
Spindle speed	Forward	r/min	3,15 ~ 315		
	Reverse	r/min	3,5 ~ 291		
<b>Feed motion</b>					
Feed per revolution	Number of feeds per revolution (longitudinal/transverse)		56 /56		
	longitudinal	mm/r	0,1 ~ 12 (0,004" ~ 0,473" )		
	transverse	mm/r	0,05 ~ 6 (0,002" ~ 0,236" )		
	upper tool-post	mm/r	0,025 ~ 3 (0,001" ~ 0,118" )		
	Number and range of metric thread		44, 1 ~ 120mm		
	Number and range of inch thread		31, 2E ~ 1/4"		
	Number and range of module thread		45, 0,5 ~ 80mm		
Tool post	Number and range of diametrical pitch thread		38, 1/2 ~ 56DP		
	Distance between spindle center-line and tool resting plane	mm	53		
	Section of tool shank	mm	□50		
	Tool post swing range	°	±90°		
	Max travel of top slide	mm	380		
	Max travel of cross slide	mm	740 (29" )	850 (33" )	850 (33" )
	Tool post travel per turn of the dials of top or cross slide	mm	0,05 (0,002" )		
rapid travel speed	Longitudinal	mm/min	3740		
	Transverse	mm/min	1870		
	Top slide	mm/min	935		
<b>Tailstock</b>					
Diameter of Tailstock quill	mm	200 (8" )			
Travel of tailstock quill	mm	300 (12" )			
Taper hole of tailstock quill		6#			
<b>Machine overall dimension</b>					
Height	mm	2120	2670	2870	
Width	mm	2360			
Max weight of workpiece	kg	12000			

C61125/31160/61200X3000,5000,6000

Foundation



	L1	2	L3	L4	L5	l
3000	1000	1000				6100
5000	1000	1000	1000	1000		8100
6000	1000	1000	1000	1000	1000	9100

Depth determined by user per soil texture.

PARALEL  
LATHE SERVICES

C61125 C61160  
C61200









C61125 C61160  
C61200

# SHV HEAVY C

**S. H. Værktøjsmaskiner ApS**

IMPORT \* EXPORT \* SERVICE

Klokkestøbervej 9  
9490 Pandrup  
Tlf. 98 20 44 00  
Fax. 98 20 42 40  
Internet: [www.shv.dk](http://www.shv.dk)  
E-mail: [info@shv.dk](mailto:info@shv.dk)