

S. H. Værktøjsmaskiner ApS

IMPORT * EXPORT * SERVICE

Klokkestøbervej 9
9490 Pandrup
Tlf. 98 20 44 00
Fax. 98 20 42 40
Internet: www.shv.dk
E-mail: info@shv.dk

SHV HEAVY

Ø 630 Ø 800 Ø 940

LATHE SERIES

PARALLEL / GAP-BED
LATHE SERIES



∅630 ∅940
∅800



CW6163B*1500

Model

CW6163B/80B/94B
CW6263B/80B/94B

Specification

750/1000/1500/2000/
3000/4000/5000/6000/
7000/9000/10000



CW6163B*3000

PARALLEL / CAP-SEE
LATHE SERIES

These lathes are suitable mainly for turning internal and external cylindrical, conical and other swing surfaces as well as various metric, inch, module and diametric pitch threads. They can also be used for broaching oil grooves and keyways. There are also following features:

1: The side wall of bed is constructed with double-rib plates, and the shape of internal ribs is of box type and bevel ribs combination. The rigidity is higher than that of ordinary lathes. The precision is stable. And these lathes can carry out strong force cutting.

2: On apron, there is a device, operated by a single lever, used for rapid traverse of the carriage. Spindle's braking and rotating direction change is controlled by hydraulic system, or by hand operation, all to user's choice.

3: The saddle guide way is glued by "TGF" soft belt wear resisting materials.

4: On user's demand, we can equip the lathe with automatic feeding mechanism. The top slide can be used independently for turning of short cone. In combination with longitudinal feeding, it can also turn long taper surface.



CW6180B×3000



CW6194B×3000



CW6163B×5000

PARALLEL / GAP-SED
LATHE SERIES

Ø630 Ø940
Ø800

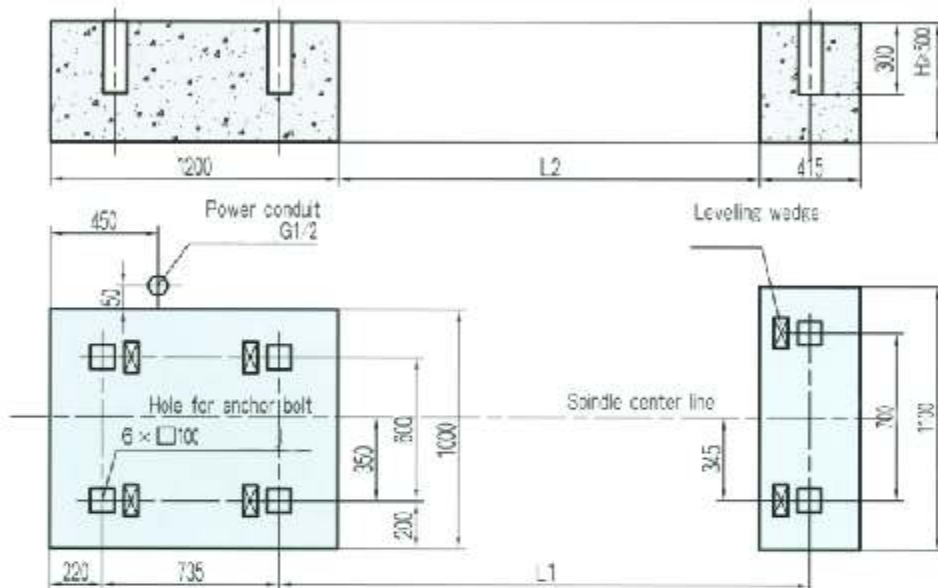
SHV HEAVY

Main technical specifications

| Item | Unit | CWB183B | CWB180B | CWB194B |
|--|--------|--|--|--|
| Capacities | | | | |
| Swing over bed | mm | 630 | 800 | 940 |
| Swing over carriage | mm | 350 | 520 | 660 |
| Maximum length of workpiece | mm | 750 1000 1500 2000 3000 4000 5000 6000 7000 9000 10000 | | |
| Maximum turning length | mm | 500 850 1350 1850 2850 3850 4850 5850 6850 8850 | | |
| Swing over gap | mm | 830 | 1000 | 1140 |
| Effective width of gap | mm | 300 | 300 | 300 |
| Pan of guideway | | 550 | 550 | 550 |
| Spindle | | | | |
| Spindle nose | | C11 | C11 | C11 |
| Spindle bore | mm | 100 | 100 | 100 |
| Taper hole of spindle | | 1:20/120 | 1:20/120 | 1:20/120 |
| Range of spindle speeds | r/min | 7.5 ~ 1000 | 6 ~ 800 | 6 ~ 800 |
| Number of spindle speeds | | 18 | 18 | 18 |
| Feed motion | | | | |
| Longitudinal and cross | r/min | 64,0.1 ~ 24.32 | 64,0.1 ~ 24.32 | 64,0.1 ~ 24.32 |
| Cross-to-longitudinal lead rate | | 1/2 | 1/2 | 1/2 |
| Screw pitch of leadscrew | mm | 12 | 12 | 12 |
| Number and range of metric thread | mm | 50,1 ~ 240 | 50,1 ~ 240 | 50,1 ~ 240 |
| Number and range of inch thread | | 26,14 ~ 1 | 26,14 ~ 1 | 26,14 ~ 1 |
| Number and range of module thread | mm | 53,0.5 ~ 120 | 53,0.5 ~ 120 | 53,0.5 ~ 120 |
| Number and range of diametrical pitch thread | | 24,28 ~ 1 | 24,28 ~ 1 | 24,28 ~ 1 |
| Rapid traverse speed of carriage | mm/min | 4000 | 4000 | 4000 |
| Tool Post | | | | |
| Max travel of cross slide | mm | 440 | 540 | 570 |
| Max travel of top slide | mm | 200 | 200 | 220 |
| Section of tool shank | mm | □32 | □32 | □32 |
| Talstock | | | | |
| Diameter of talstock quill | mm | 100 | 100 | 100 |
| Travel of talstock quill | mm | 250 | 250 | 250 |
| Taper hole of talstock quill | | morse 5 | morse 5 | morse 5 |
| Acceptance conditions | | | | |
| GB/T4020 — 1997 | | GB/T4020 — 1997 Accuracy parallel lathe | | |
| JB/T2322 — 1993 | | JB/T2322 — 1993 Terms parallel lathe | | |
| Other | | | | |
| Main motor power | kW | 11 | 11 | 11 |
| Machine mass | kg | 3200 3400 3700 4200 4700 5600 6600 7600 8800 10800 11800 | 3400 3600 3900 4400 4900 5000 7000 8000 9000 11000 12000 | 3900 4100 4400 4300 6400 6500 7500 8500 9500 11500 12500 |
| Machine overall dimensions | | | | |
| Length | mm | 2950 3275 3725 4225 5225 6275 7355 8355 9275 11275 12275 | | |
| Width | mm | 1335 | 1473 | 1430 |
| Height | mm | 1537 | 1622 | 1690 |

CW6163B/80B/94B
 CW6263B/80B/94B x750, 1000, 1500

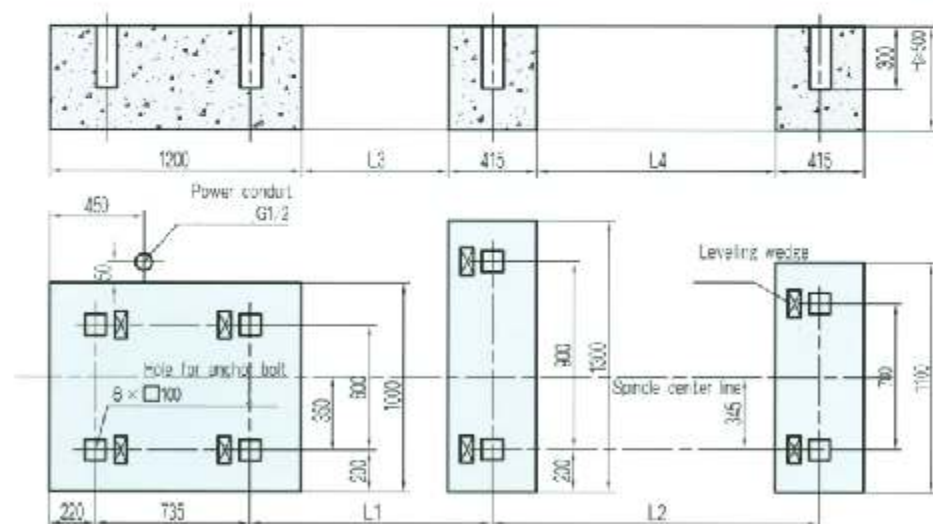
Foundation



| | 750 | 1000 | 1500 |
|----|------|------|------|
| L1 | 1445 | 1780 | 2210 |
| L2 | 865 | 1300 | 1750 |

CW6163B/80B/94B
 CW6263B/80B/94B x2000, 3000

Foundation



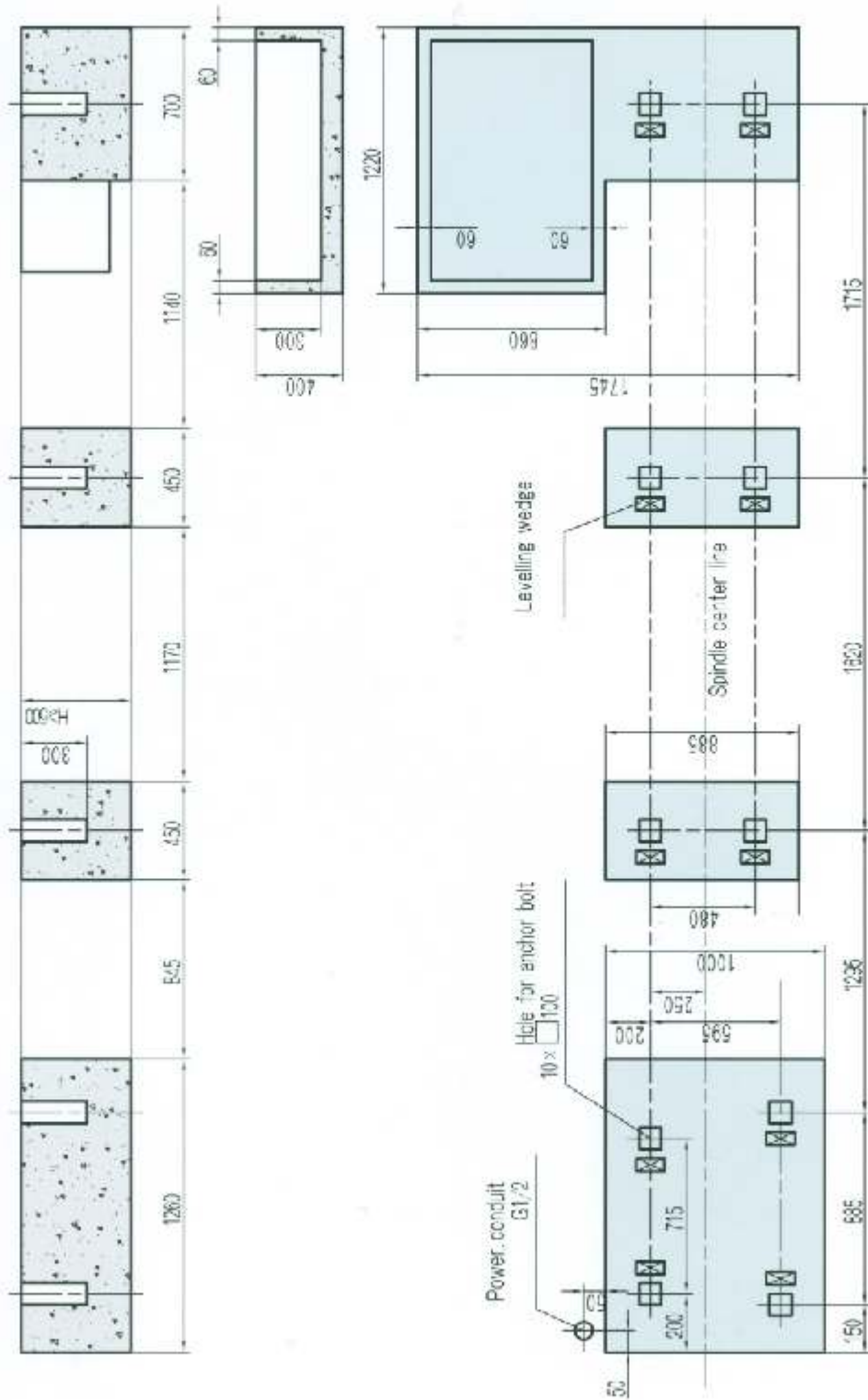
| | L1 | L2 | L3 | L4 |
|------|------|------|------|------|
| 2000 | 1152 | 1558 | 690 | 1130 |
| 3000 | 1502 | 2108 | 1140 | 1650 |

PARALLEL / SÄPPEL
 LATHE SERIES

Ø630 Ø800
 Ø940

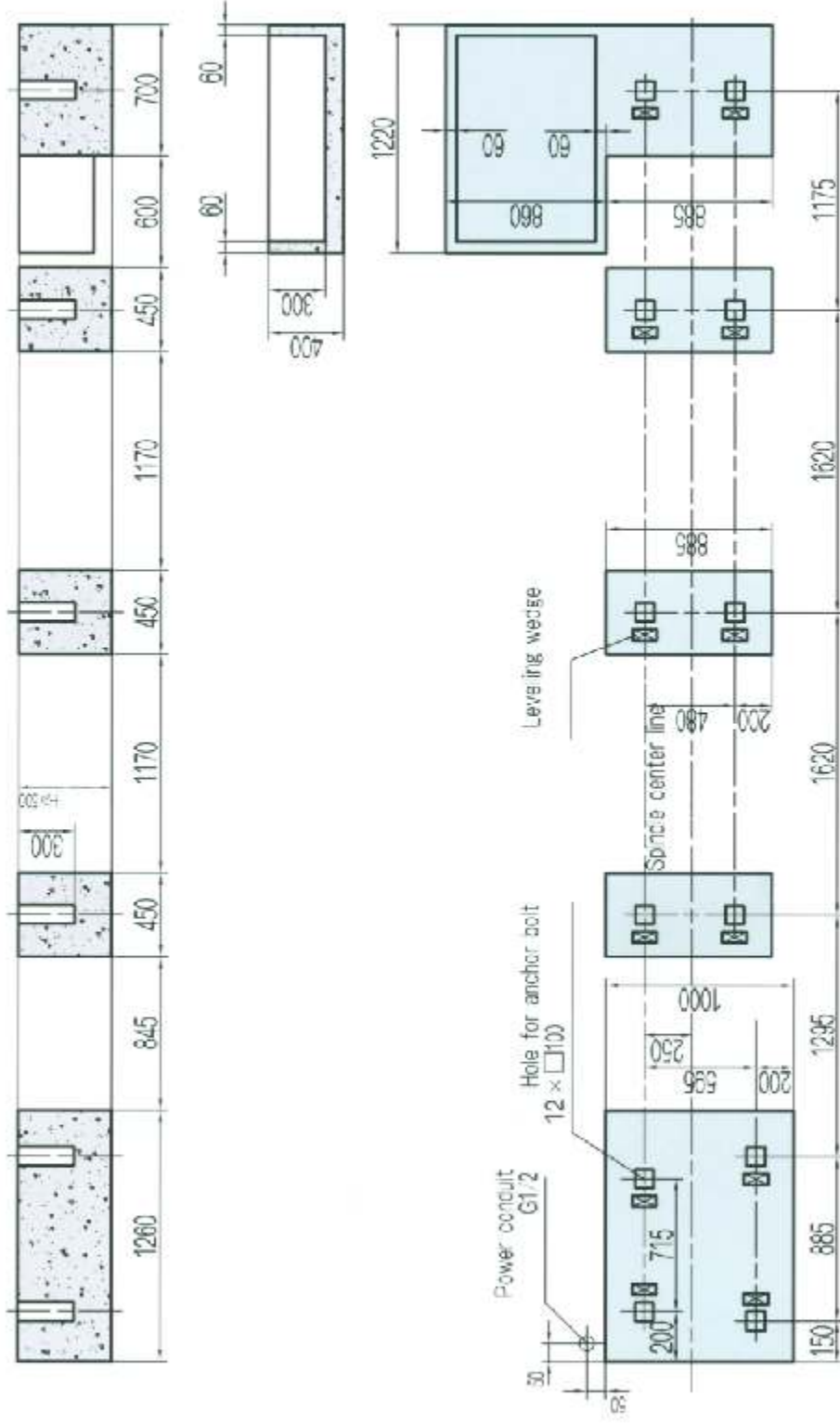
Foundation

CW6163B/80B/94B X4000
CW6263B/80B/94B X4000



CW6163B/80B/94B X5060
 CW6263B/80B/94B

Foundation



PARALLEL / GAP-SEC
 LRTHE SERIES

Ø630 Ø800 Ø940

PARALLEL / GAP-BED
LATHE SERIES

Ø 630 Ø 940
Ø 800

SHV HEAVY

S. H. Værktøjsmaskiner ApS

IMPORT * EXPORT * SERVICE

Klokkestøbervej 9
9490 Pandrup
Tlf. 98 20 44 00
Fax. 98 20 42 40
Internet: www.shv.dk
E-mail: info@shv.dk